

# Payphone

feat Wiz Khalifa

Maroon 5

Arranged by lilTranscriber aka LittleTranscriber

Measures 1-4 of the piano arrangement. The key signature is B major (four sharps) and the time signature is 4/4. The melody in the right hand features eighth and sixteenth notes, while the left hand provides a steady bass line with eighth notes.

Measures 5-8. The melody continues with eighth notes and includes a quarter rest in measure 8. The bass line remains consistent with eighth notes.

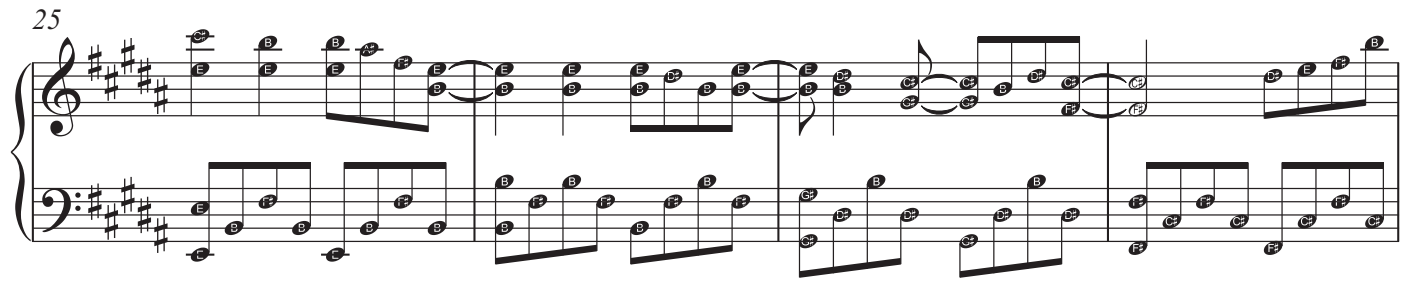
Measures 9-12. Measures 9-11 feature a more complex melody with sixteenth notes and eighth notes. Measure 12 has a quarter rest in the right hand. The bass line continues with eighth notes.

Measures 13-16. Measures 13-15 feature a complex melody with sixteenth notes and eighth notes. Measure 16 has a quarter rest in the right hand. The bass line continues with eighth notes.

Measures 17-20. Measures 17-19 feature a complex melody with sixteenth notes and eighth notes. Measure 20 has a quarter rest in the right hand. The bass line continues with eighth notes.

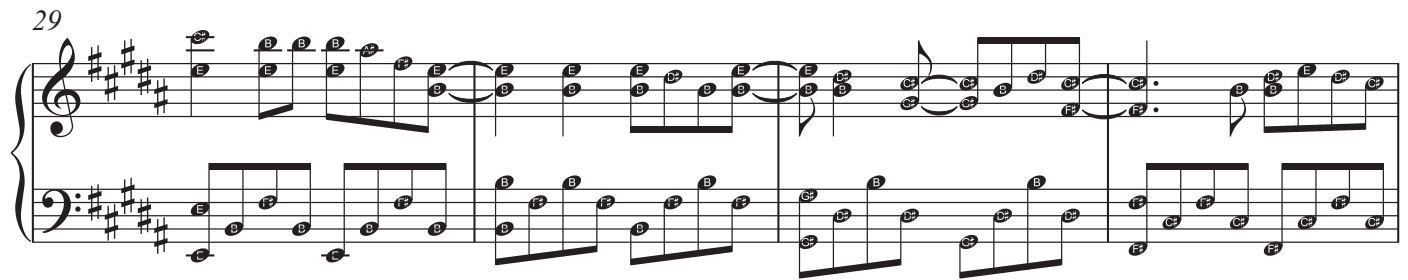
Measures 21-24. Measures 21-23 feature a complex melody with sixteenth notes and eighth notes. Measure 24 has a quarter rest in the right hand. The bass line continues with eighth notes.

25



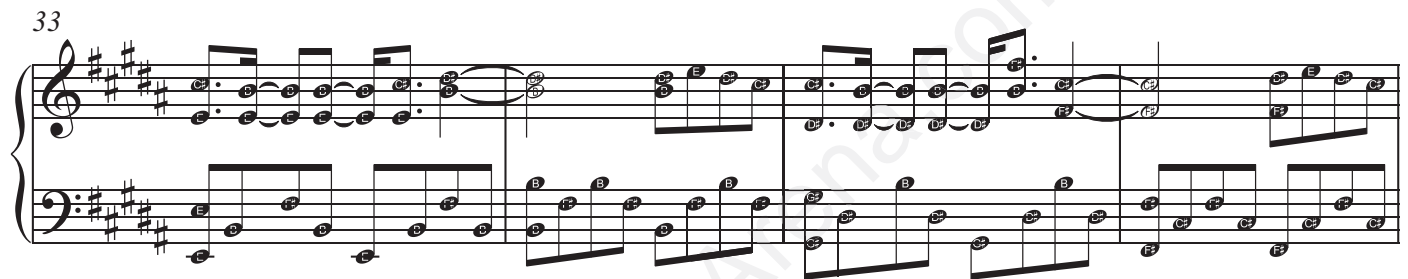
Measures 25-28 of a piano piece in E major. The right hand features a melodic line with eighth and sixteenth notes, while the left hand provides a steady eighth-note accompaniment. Measure 28 ends with a repeat sign.

29



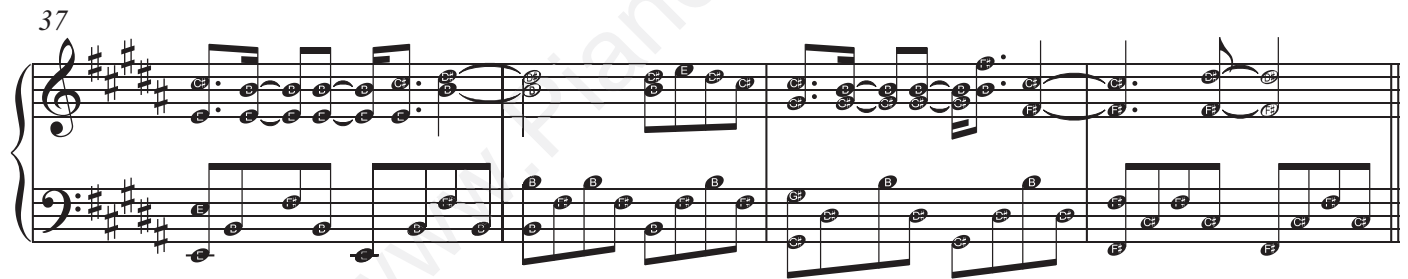
Measures 29-32. The right hand continues the melodic development with some rests, and the left hand maintains the eighth-note accompaniment. Measure 32 ends with a repeat sign.

33



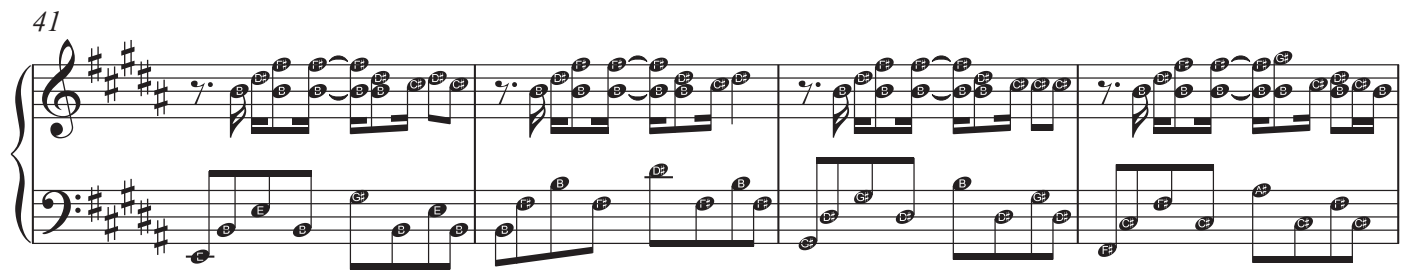
Measures 33-36. The right hand introduces a more complex rhythmic pattern with dotted eighth notes and sixteenth notes. The left hand continues the eighth-note accompaniment. Measure 36 ends with a repeat sign.

37



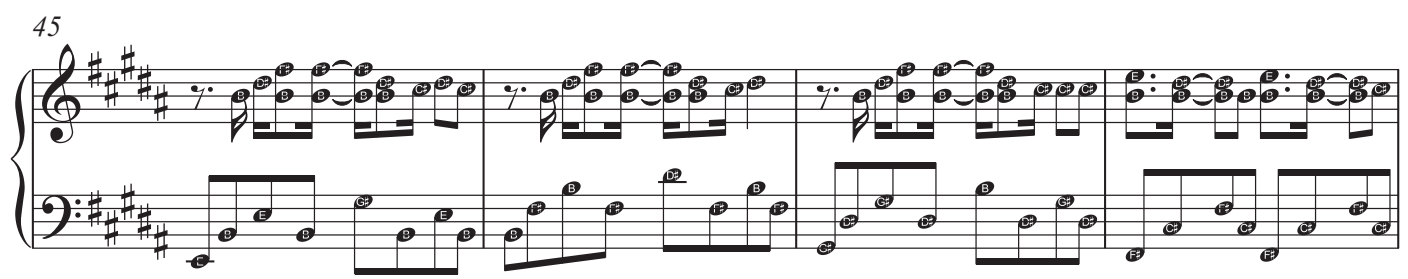
Measures 37-40. The right hand features a series of sixteenth-note runs. The left hand continues the eighth-note accompaniment. Measure 40 ends with a repeat sign.

41



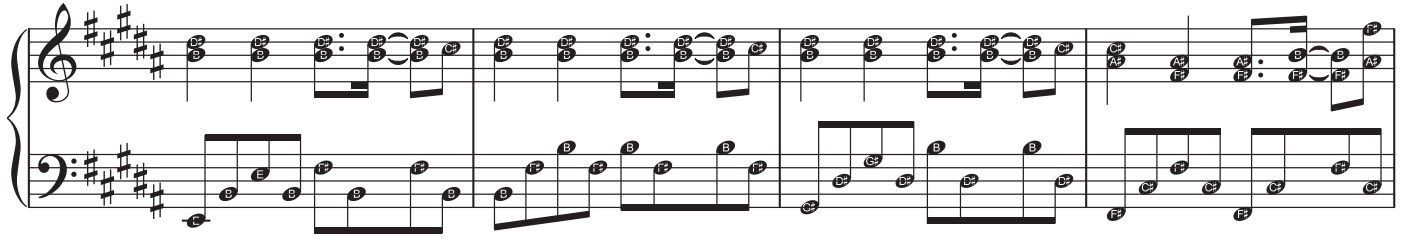
Measures 41-44. The right hand continues with sixteenth-note runs, and the left hand maintains the eighth-note accompaniment. Measure 44 ends with a repeat sign.

45

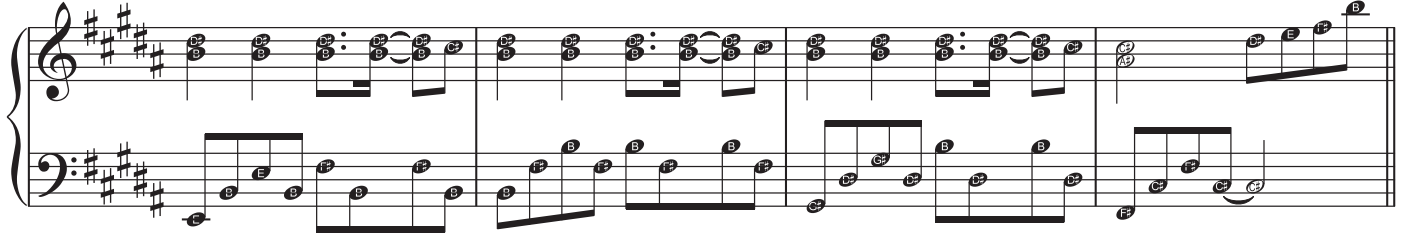


Measures 45-48. The right hand features a series of sixteenth-note runs. The left hand continues the eighth-note accompaniment. Measure 48 ends with a repeat sign.

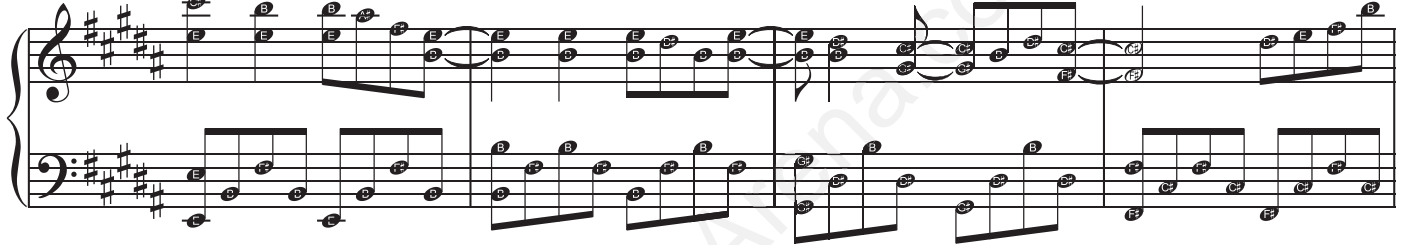
49



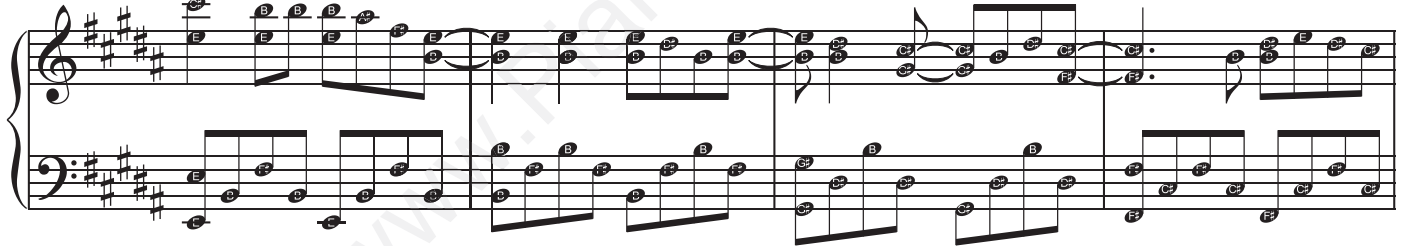
53



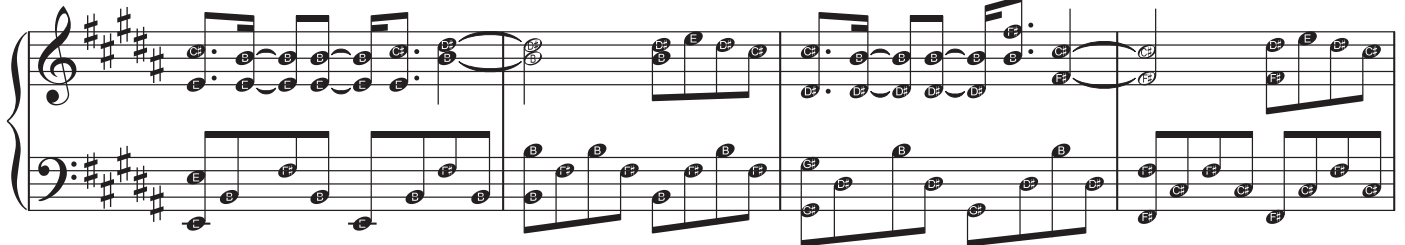
57



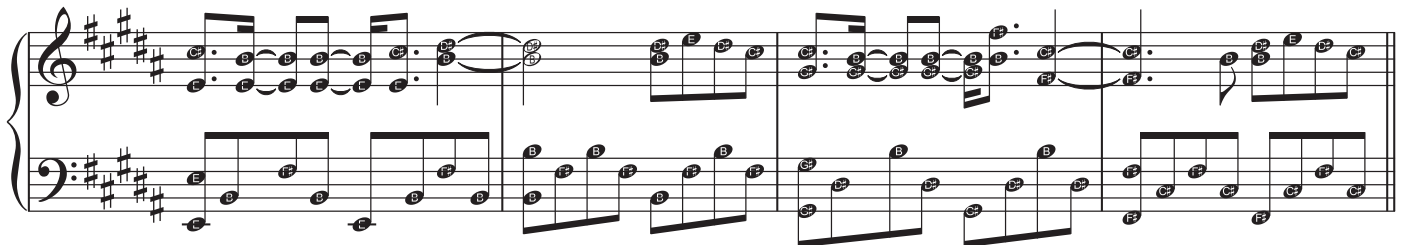
61



65



69



73

Measures 73-76 of a piano piece. The key signature is three sharps (F#, C#, G#). The music features a complex texture with many accidentals and ties. The right hand has a melodic line with many sharps and naturals, while the left hand provides a harmonic accompaniment with chords and single notes.

77

Measures 77-80 of a piano piece. The key signature is three sharps (F#, C#, G#). The music continues with a complex texture, featuring many accidentals and ties. The right hand has a melodic line with many sharps and naturals, while the left hand provides a harmonic accompaniment with chords and single notes.

81

Measures 81-84 of a piano piece. The key signature is three sharps (F#, C#, G#). The music continues with a complex texture, featuring many accidentals and ties. The right hand has a melodic line with many sharps and naturals, while the left hand provides a harmonic accompaniment with chords and single notes.

85

Measures 85-88 of a piano piece. The key signature is three sharps (F#, C#, G#). The music continues with a complex texture, featuring many accidentals and ties. The right hand has a melodic line with many sharps and naturals, while the left hand provides a harmonic accompaniment with chords and single notes.

89

Measures 89-92 of a piano piece. The key signature is three sharps (F#, C#, G#). The music continues with a complex texture, featuring many accidentals and ties. The right hand has a melodic line with many sharps and naturals, while the left hand provides a harmonic accompaniment with chords and single notes.

93

Measures 93-96 of a piano piece. The key signature is three sharps (F#, C#, G#). The music continues with a complex texture, featuring many accidentals and ties. The right hand has a melodic line with many sharps and naturals, while the left hand provides a harmonic accompaniment with chords and single notes.